

SPECIFICATIONS

UNITS
 UNIT SIZE - 50 CM X 50 CM X 2.5 CM
 (20" X 20" X 1")
 AVAILABLE IN 9 STANDARD ROLL SIZES

UNIT WEIGHT - 558 GRAMS (19 OZ.)
 OR 2.2 KG (4.8 POUNDS)

STRENGTH - 402 KG/CM (5720 PSI)

COLOR - BLACK (STANDARD)

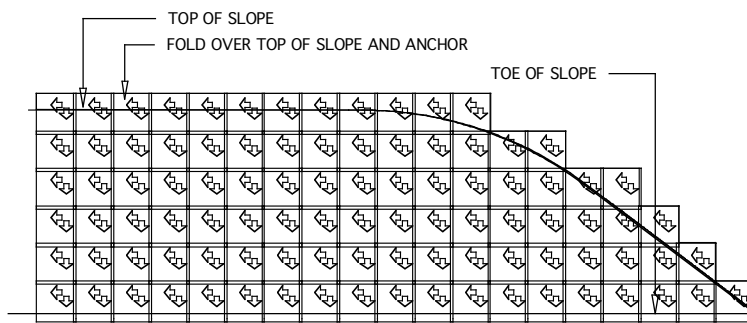
RESIN - 95% POST-CONSUMER
 RECYCLED HDPE/LDPE

FABRIC
 WEIGHT - 2.25 OZ./SY (76.3 GM/M²)
 TENSILE - 65 x 40 LB/FT (585 KG/M²)

SLOPETAME2 CROSS-BRACING

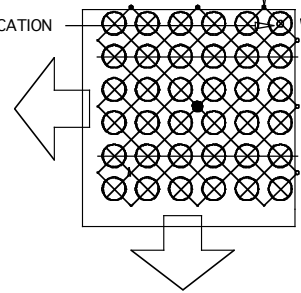
SLOPETAME2 UNITS

SLOPETAME2 FABRIC

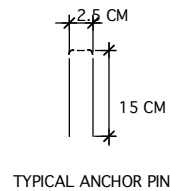
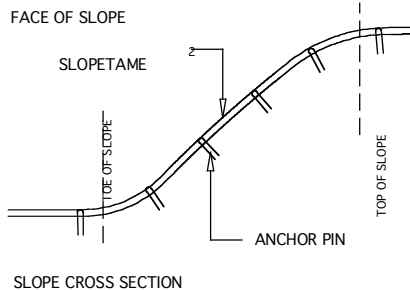


START AT TOP OF SLOPE
 WITH HOLES IN UPPER RIGHT
 CORNER.

TYPICAL ANCHOR PIN LOCATION



PLACE ROLLS GOING DOWN THE
 SLOPE WITH CROSS-BRACING RUNNING
 ACROSS THE SLOPE



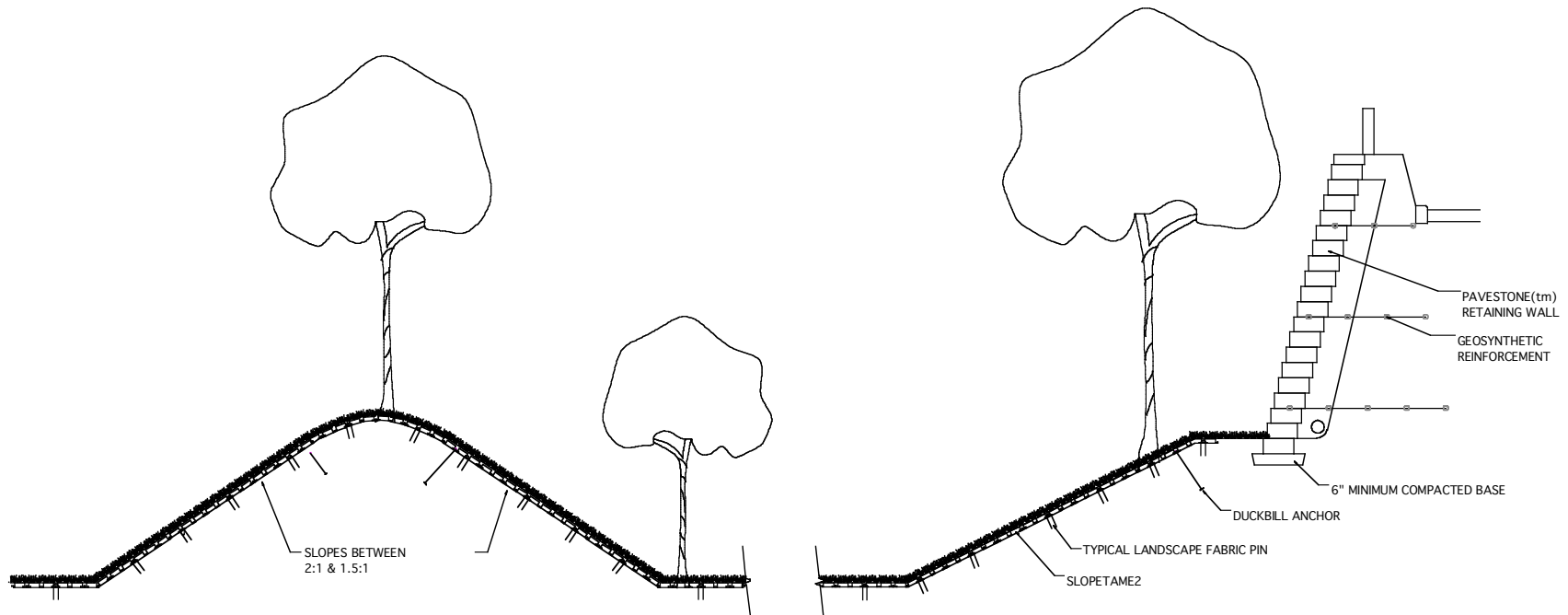
TYPICAL SLOPETAME2 ASSEMBLY AND ANCHORAGE

CHOOSE THIS PRODUCT FOR STABILIZING SLOPE CONDITIONS

NOT TO SCALE
**Invisible
 Structures, Inc.**

St2.dwg

1600 Jackson St., Suite 310
 Golden, Colorado 80401
 800-233-1510 OR 303-233-8383
 FAX: 303-233-8282
 rev. 08/04



NOTE: DRAWING NOT FOR CONSTRUCTION PURPOSES

SLOPETAME2 DETENTION POND DETAIL

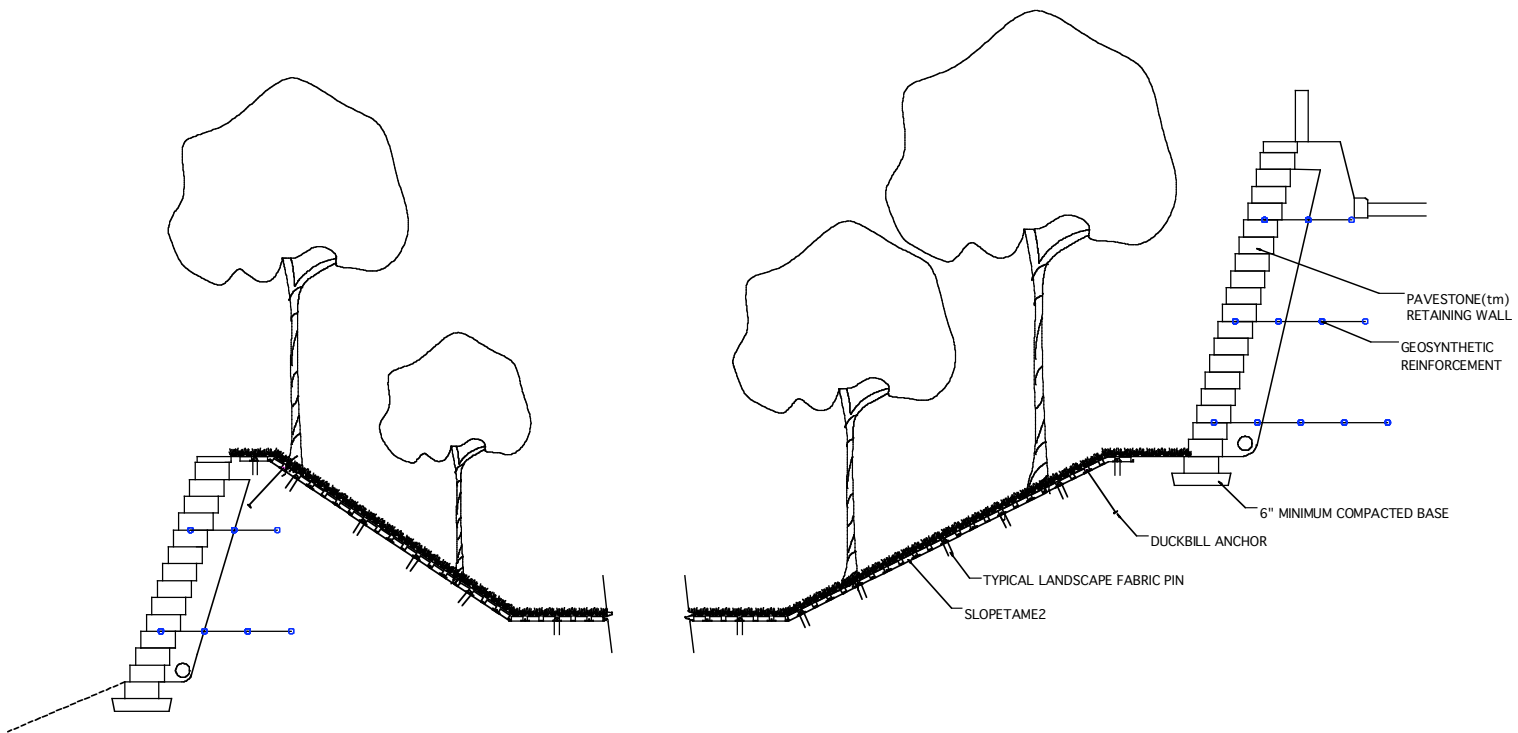
SLOPE REINFORCEMENT FOR DETENTION PONDS

NOT TO SCALE

Invisible Structures, Inc.

Deten-pond.dwg

1600 Jackson St., SUITE 310
 GOLDEN, COLORADO 80401
 800-233-1510 OR 303-233-8383
 FAX: 303-233-8282
 www.invisiblestructures.com
 rev. 08/04



NOTE: DRAWING NOT FOR CONSTRUCTION PURPOSES

SLOPETAME2 RETENTION POND RETAINMENT

NOT TO SCALE

Invisible
Structures, Inc.

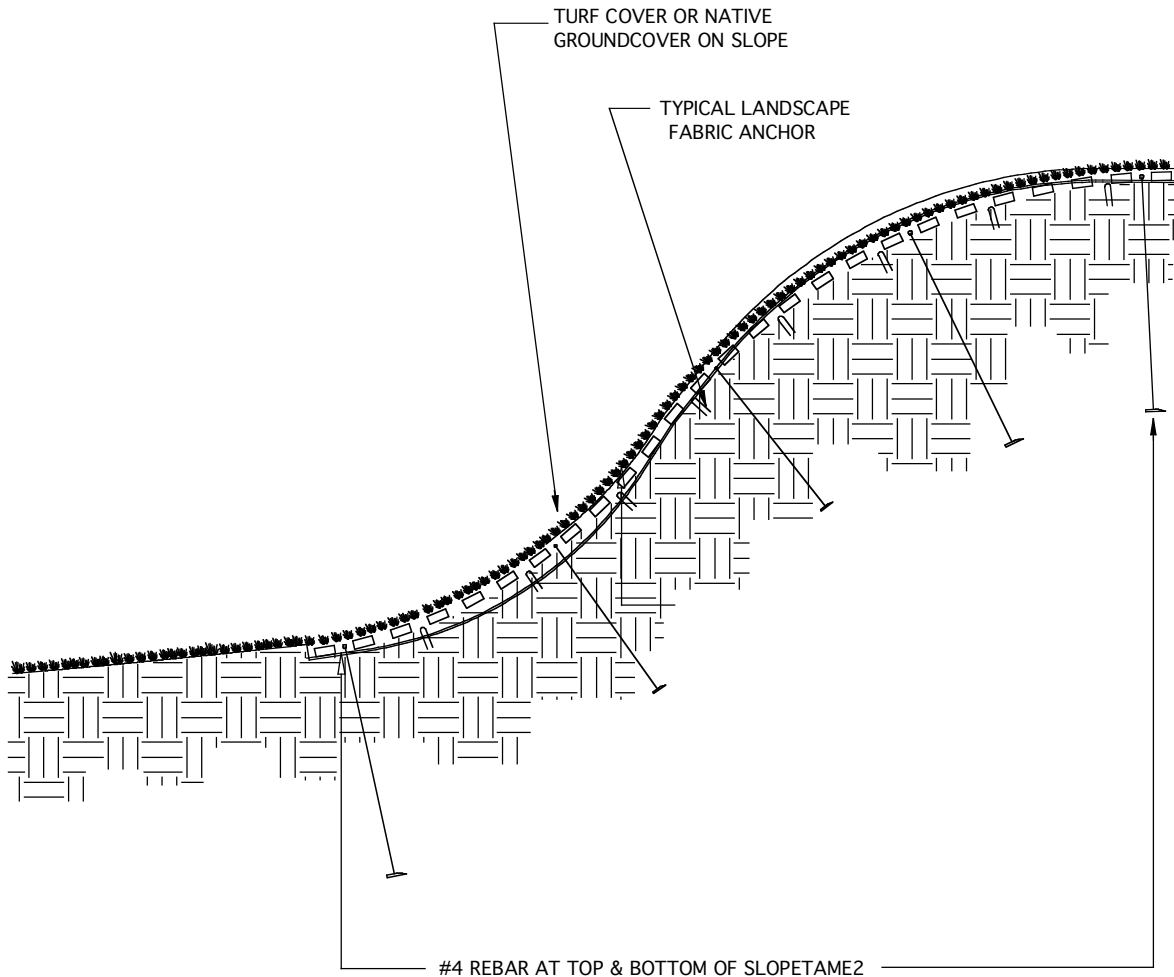
ST2RetentionPond.dwg

SLOPE REINFORCEMENT FOR RETETION POND

1600 Jackson St., SUITE 310
GOLDEN, COLORADO 80401
800-233-1510 OR 303-233-8383
FAX: 303-233-8282
www.invisiblestructures.com
rev. 08/04

1

1 OF 1



#4 REBAR AT TOP & BOTTOM OF SLOPETAME2

SECURE REBAR USING DUCKBILL ANCHOR OR
SIMILAR PRODUCT W/ ANCHORS SPACED AT
2 METERS (6.6') O.C. OR AS NEEDED

SLOPETAME2 CHANNEL REINFORCEMENT

NOT TO SCALE

CHOOSE THIS PRODUCT FOR CHANNEL EROSION AND SEDIMENT CONTROL

Invisible
Structures, Inc.

St2-channel.dwg

1600 Jackson St., Suite 310
Golden, CO 80401
800-233-1510 OR 303-233-8383
FAX: 303-233-8282
www.invisiblestructures.com
Rev. 08/04

1
1 OF 1